



**HandiFoam**

# ABOUT



- Completely Professional™
- 40+ year history
- Widest breadth of products in the industry
  - Innovation leader in chemistry and delivery systems
  - Sealants, insulation and adhesives in a variety of formulas, sizes and packaging
- Industry leader in product and environmental stewardship
  - GREENGUARD GOLD Certification
  - First to transition to Low GWP blowing agents
- Unparalleled support – Masterworks field trainers provide over 500 trainings annually

# NEW DEVELOPMENTS

## LOW GWP (GLOBAL WARMING POTENTIAL)

Regulations require the transition from high global warming potential (GWP) blowing agents to low GWP.

We have taken these regulations as an opportunity to improve our polyurethane foam product line by becoming regulatory compliant and improving formulation performance, packaging and the dispensing system.

At ICP Building Solutions Group, innovation and sustainability are a part of our everyday business.



1<sup>ST</sup> TO MARKET WITH LOW GWP FORMULATIONS.

<https://www.americanchemistry.com/chemistry-in-america/chemistries/polyurethane>

## HFC REGULATIONS

### MAP LEGEND:

- 2021 IMPLEMENTED REGULATIONS (Canada & United States)
- ACTIVE RULEMAKING



## TWO-COMPONENT SPRAY POLYURETHANE FOAM

HandiFoam low pressure spray polyurethane foams (SPF) are chemically cured and designed for the professional to fill large voids and surfaces.

*Innovation leader  
in chemistry!*



### HANDIFOAM FR (HFO)

- Available in a variety of sizes (disposable and refillable) to fill and insulate large voids and surfaces
- Excellent adhesion properties create a continuous air barrier that completes the building envelope
- Improves indoor air quality and lowers heating and cooling costs
- **Class 1(A) fire rated foam at 2" that meets various building code requirements for insulation.**
- **UL GREENGUARD® Gold Certified**
- Dispensed using the patented Handi-Gun dispensing unit



[Click here to visit the Technical Resources page available on www.HandiFoam.com](http://www.HandiFoam.com)

# REPLACEMENT ITEM DETAILS

CURRENT SKU	REPLACEMENT SKU	REPLACEMENT SKU DESCRIPTION
P12058	P12055	II-200 HandiFoam FR HFO
P12059	P12056	II-600 HandiFoam FR HFO
P23320	P23220	System 8 HandiFoam FR HFO Refill
P23090	P23093	System 17 Handi-Foam FR HFO Refill
P23290	P23293	System 27 Handi-Foam FR HFO Refill
P23490	P23487	System 60 HandiFoam FR HFO Refill
P23890	P23887	System 120 HandiFoam FR HFO Refill
P12058C	P12055C	II-200 HandiFoam FR HFO - Canada
P12059C	P12056C	II-600 HandiFoam FR HFO - Canada
P23890C	P23887C	System 120 HandiFoam FR HFO Refill - Canada

**\*ALL CURRENT HFO ORDERS WILL BE FULFILLED WITH ABOVE REPLACEMENT SKUS**

---

# BEST PRACTICES

# COLORWISE® SNAP-TIP NOZZLES

Stop spraying if foam is 60°F(16°C) and below to avoid off-ratio foam and yield-loss, and properly condition the chemical before spraying again.

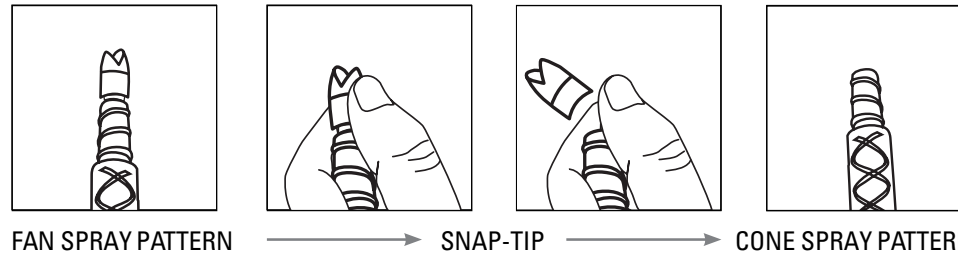
*It takes three times longer to warm chemical than it does to cool it down.*

ColorWise®  
TEMPERATURE WARNING NOZZLES



## WHEN SPRAYING, USE THE **COLORWISE® SNAP-TIP NOZZLES** FOR OPTIMUM SPRAY PATTERN & ADHESION.

Nozzle changes from clear to blue, indicating that the chemical has reached a cold temperature, below 60°F (16°C), and the adhesive should not be dispensed.



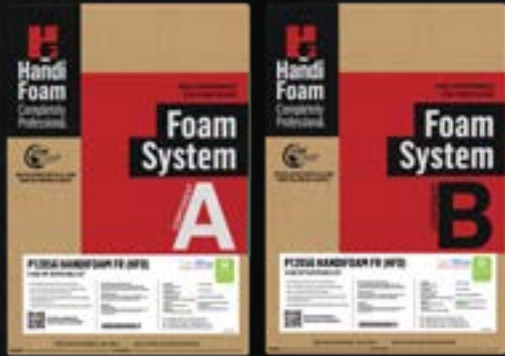
### One nozzle for all applications!

Easily convert from fan to cone spray pattern without changing the nozzle. Updated nozzle packs now containing 10 snap-tip nozzles.

SKU	DESCRIPTION
F66129	ColorWise® Snap-Tip Nozzle - 10 pack
F66141	ColorWise® Snap-Tip Nozzle - 25 pack

[CLICK HERE TO VIEW OUR  
\*\*COLD WEATHER BULLETIN\*\*](#)

# TIPS FOR SPRAYING QUALITY FOAM



## RECOMMENDED PICTURE FRAMING TECHNIQUE

- For optimum adhesion results, aim the cone nozzle tip so equal amounts of the foam being sprayed will adhere to both the adjacent substrates.
- **Spraying at a 45° angle into the corner of the cavity,** will help ensure the best adhesion to both surfaces.
- After perimeter is framed, fill in the rest of the cavity with a back and forth motion.
- New QR code addition to sticker located on the front of each box. Easily scan to view this presentation.



**[CLICK HERE TO WATCH  
A QUICK VIDEO](#)** ON THIS NEW  
APPLICATION TECHNIQUE!

## OPTIMUM CHEMICAL TEMPERATURES

- Always maintain a chemical temperature between **70-85°F (21-29°C).**





[www.icpgroup.com](http://www.icpgroup.com)

[info@icpgroup.com](mailto:info@icpgroup.com)

978.623.9980